



HSL (phospho Ser855) Polyclonal Antibody

Catalog No	YP-Ab-03559
Isotype	IgG
Reactivity	Human;Mouse;Rat
Applications	WB;IHC;IF;ELISA
Gene Name	LIPE
Protein Name	Hormone-sensitive lipase
Immunogen	The antiserum was produced against synthesized peptide derived from human HSL around the phosphorylation site of Ser855/554. AA range:520-569
Specificity	Phospho-HSL (S855) Polyclonal Antibody detects endogenous levels of HSL protein only when phosphorylated at S855.
Formulation	Liquid in PBS containing 50% glycerol, 0.5% BSA and 0.02% sodium azide.
Source	Polyclonal, Rabbit,IgG
Purification	The antibody was affinity-purified from rabbit antiserum by affinity-chromatography using epitope-specific immunogen.
Dilution	WB: 1/500 - 1/2000. IHC: 1/100 - 1/300. ELISA: 1/20000.. IF 1:50-200
Concentration	1 mg/ml
Purity	≥90%
Storage Stability	-20°C/1 year
Synonyms	LIPE; Hormone-sensitive lipase; HSL
Observed Band	81kD
Cell Pathway	Cell membrane . Membrane, caveola . Cytoplasm, cytosol . Lipid droplet . Found in the high-density caveolae. Translocates to the cytoplasm from the caveolae upon insulin stimulation (PubMed:17026959). Phosphorylation by AMPK reduces its translocation towards the lipid droplets (By similarity). .
Tissue Specificity	Testis.
Function	catalytic activity:Diacylglycerol + H(2)O = monoacylglycerol + a carboxylate.,catalytic activity:Monoacylglycerol + H(2)O = glycerol + a carboxylate.,catalytic activity:Triacylglycerol + H(2)O = diacylglycerol + a carboxylate.,enzyme regulation:Rapidly activated by cAMP-dependent phosphorylation under the influence of catecholamines. Dephosphorylation and inactivation are controlled by insulin.,function:In adipose tissue and heart, it primarily hydrolyzes stored triglycerides to free fatty acids, while in steroidogenic tissues, it principally converts cholesteryl esters to free cholesterol for steroid hormone production.,pathway:Glycerolipid metabolism; triacylglycerol degradation.,similarity:Belongs to the 'GDXG' lipolytic enzyme family.,subcellular location:Found in the high-density caveolae. Translocates to the cytoplasm from the caveolae upon insulin stimulation.,subunit:Interacts wi

**Background**

The protein encoded by this gene has a long and a short form, generated by use of alternative translational start codons. The long form is expressed in steroidogenic tissues such as testis, where it converts cholesteryl esters to free cholesterol for steroid hormone production. The short form is expressed in adipose tissue, among others, where it hydrolyzes stored triglycerides to free fatty acids. [provided by RefSeq, Jul 2008],

matters needing attention

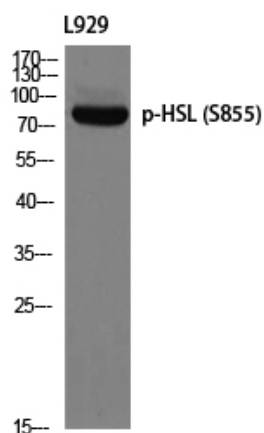
Avoid repeated freezing and thawing!

Usage suggestions

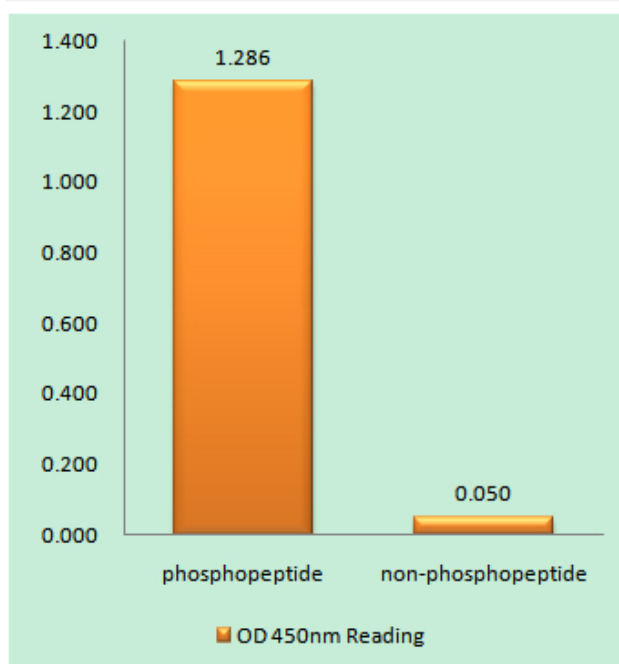
This product can be used in immunological reaction related experiments. For more information, please consult technical personnel.



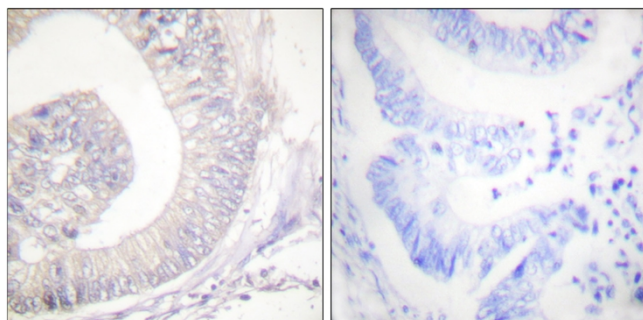
Products Images



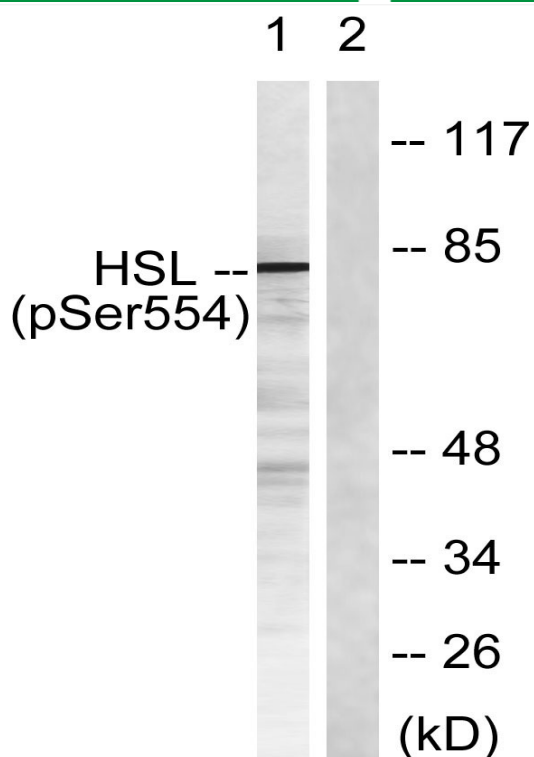
Western blot analysis of L929 using p-HSL (S855) antibody. Antibody was diluted at 1:1000



Enzyme-Linked Immunosorbent Assay (Phospho-ELISA) for Immunogen Phosphopeptide (Phospho-left) and Non-Phosphopeptide (Phospho-right), using HSL (Phospho-Ser855/554) Antibody



Immunohistochemistry analysis of paraffin-embedded human colon carcinoma, using HSL (Phospho-Ser855/554) Antibody. The picture on the right is blocked with the phospho peptide.



Western blot analysis of lysates from HeLa cells treated with Adriamycin 0.5ng/ml 24h, using HSL (Phospho-Ser855/554) Antibody. The lane on the right is blocked with the phospho peptide.